

Contractors Stand Behind Asphalt in Groundbreaking Major Corridor Project

Successful Bids Received on Long-Term Warranty Project

Colorado's asphalt industry recently entered into a groundbreaking partnership with the Colorado Department of Transportation (CDOT), when a major corridor project in El Paso County included a ten-year warranty for the asphalt pavement, the first time CDOT has received a long-term warranty provision for an asphalt pavement project.

Rocky Mountain Materials and Asphalt, Inc. of Colorado Springs is the low bidder on the \$5.2 million project (NH 0243-068), which will add two new lanes for five miles on US 24 east of Colorado Springs, using approximately 8 inches of hot mix asphalt (80,000 tons). Work has begun on the project and is expected to be completed in late-2005.

"We are excited to showcase the use of asphalt for an important new alignment type project," stated Rob Mangone, Vice President/General Manager, Rocky Mountain Materials and Asphalt, Inc. "Including a 10-year warranty provides a strong indication of the confidence of our



US 24 Project Team (front row) (left to right) Doug Coffee - Rocky Mountain Materials and Asphalt; Mark Andrew CDOT - Resident Engineer, Rob Mangone - Rocky Mountain Materials and Asphalt; Paul Reinsma CDOT - Project Engineer; Industry Support (back row) (left to right) Tom Peterson, CAPA, Scott Davis - Schmidt Construction, Mike MacDonald - Kiewit Western Co., Steve Burnside - Lafarge NA.

US 24 Long Term Warranty Project – West end of Project, looking east.



Colorado Traveler

Where was this photo taken? Each issue of *The High Road* features a photo of a location in Colorado. If you think you know this location, let us know. The winner will be identified in the next issue of *The High Road*. ♦

industry in the use of asphalt for similar new alignment or reconstruction projects on the Interstate and other major corridors in Colorado's Front Range."

CDOT partnered with the Colorado Asphalt Pavement Association (CAPA) in developing the new long-term warranty provision for work in major corridors, such as I-25 and I-70.

"It is our hope that with the results of this project, the Department will now move forward with a more competitive process of using asphalt for new alignment and reconstruction type projects on major corridors in Colorado's Front Range," stated Tom Peterson, P.E.,

Executive Director of the Colorado Asphalt Pavement Association (CAPA).

CDOT Executive Director Tom Norton added, "Offering an extended warranty provides an added level of assurance that the asphalt industry can provide the quality products needed on this type of project."

CDOT successfully bid, awarded and constructed a 10 year concrete pavement warranty three years ago on a project on I-70 near Stratton. It is expected that the next step in the process will be for CDOT to plan a design/build project that would allow either asphalt or concrete for a major corridor new or reconstruction project. ♦

CAPA Board of Directors

President

Rob Mangone, Vice President
Rocky Mtn Materials & Asphalt
Colorado Springs, CO

Vice President

Steve Peterson, VP/General Manager
Lafarge North America
Denver, CO

Secretary

Ken Coulson, Vice President
Coulson Excavating Inc.
Loveland, CO

Treasurer

Jeff Keller, President
Asphalt Paving Co.
Golden, CO

Director - 1st Past President

Scott Davis, Vice President
Schmidt Construction Co.
Colorado Springs, CO

Director

Kevin Anderson, VP/General Manager
Aggregate Industries
Golden, CO

Director

John Paul Ary, Secretary/Treasurer
A&S Construction
Canon City, CO

Director

Tony Connell, VP/Division Manager
Connell Resources
Steamboat Springs, CO

Director

Jim Fife, President
Western Colorado Testing, Inc.
Grand Junction, CO

Director

Dan Hunt, President
Asphalt Specialties Co.
Henderson, CO

Director

Tom Katyrnyuk, General Manager
Sinclair Oil Corp.
Salt Lake City, UT

Director

Jeff Kresl, Denver District Area Manager
Kiewit Western Company
Littleton, CO

Director

Craig Lamberty, President
United Companies
Grand Junction, CO

Director

Tim Lyons, Division Manager
Brannan Sand & Gravel
Denver, CO

Director

Russ Otterstein, President
Premier Paving, Inc.
Denver, CO

Director

Norb Schreiber, Joint Venture Manager
Koch Performance Asphalt Company
Centennial, CO

Director

Ben Vagher, President
A-1 Chipseal Company
Broomfield, CO

Director

Jim Wilkins, Senior Sales Manager
Wagner Equipment
Denver, CO

NAPA State Director

Curt Marvel, General Manager
Brannan Sand & Gravel
Denver, CO

Executive Director

Tom Peterson, P.E., Executive Director
Colorado Asphalt Pavement Assn.
Centennial, CO



CAPA Lobbyist Linda Kirscht briefs the CAPA Board of Directors on upcoming legislation at the September meeting.



CAPA Board of Directors - September Meeting, Hosted at Brannan Sand and Gravel's new corporate office 2500 Brannan Way, Denver.

CAPA 2004 Golf Event ACE Sponsors:



CUTLER Repaving Inc.

Colorado Asphalt Pavement Association

6880 South Yosemite Court, Suite 110
Centennial, Colorado 80112

Telephone 303.741.6150 • Fax 303.741.6146

website: www.co-asphalt.com

Tom Peterson, Executive Director

Rodger Young, Director of Technical Services

Michelle Valdez - Executive Assistant

Tom Clayton, RMAEC Program Manager

Diane Hammond, RMAEC Administrative Assistant

Denis Donnelly, Research Engineer



Colorado Traveler

Congratulations to **Stephany Westhusin, P.E. Transportation Project Management Coordinator, City of Boulder**, for correctly identifying the location of the Colorado Traveler in our last issue of the High Road. The correct location is Table Mesa Drive in Boulder, westbound just east of Broadway. ♦

MAKING EVERY PROJECT A "PARTNERSHIP SUCCESS STORY"

One of the joys of working in the asphalt production/construction business is working with good people and having projects that come out right. We had a "once in a lifetime" type project earlier this construction season. The project went so well that afterwards I sat down and wrote a quick note to Craig Siracusa, CDOT Chief Engineer. Here is what I said,

To: Craig Siracusa, CDOT Chief Engineer, August, 2004

RE: Project No. NH-0243-067 State Hwy 24 East of Peterson Field

Our company was pleased to be a part of a project that, as a contractor, we were sorry to see come to an end. I have been with Rocky Mountain Materials and Asphalt Inc. for twenty three years and can say without hesitation that this was the best construction/paving project I have been involved in. The spirit of partnership, professionalism and the cooperation of the CDOT personnel with our construction forces allowed the early completion of the project while staying under budget and with the least interference and inconvenience to the general public.

In addition, we have had no accidents or claims on this project for the duration of the construction. I am very pleased with the quality of our final product and again I attribute this to the partnership of our field personnel and the fine efforts of your staff. Please extend our thanks to everyone who was involved – Materials Engineer, Resident Engineer, Project Engineer, inspectors, testers, and all the project personnel for a job well done.

Rob Mangone, Vice President/General Manager, Rocky Mountain Materials and Asphalt Inc. Colorado Springs, Colorado

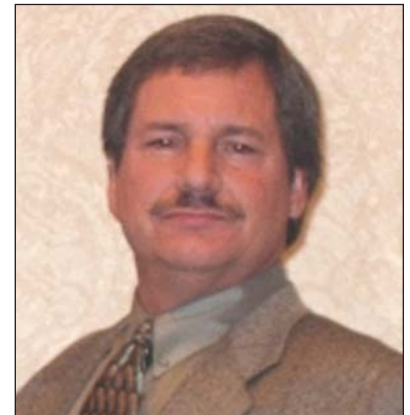
I fully agree with Mr. Siracusa's response, "We need to figure out how we can replicate this partnership success story on every project!"

As an association, the Colorado Asphalt Pavement Association (CAPA) has put much effort into making every project a success story. Recent accomplishments include the development of the asphalt inspector certification program that will be required for inspectors on CDOT projects, the development of a Guide Contract Documents and Specifications for Hot Mix Asphalt Pavement Construction on Colorado Roadways, a newly developed Pre-Paving Meeting Guideline Agenda, project specific constructability reviews, and the list continues.

It's my passion as the President of CAPA to see that as many projects as possible are partnership success stories and I hope that you make use of some of the resources available through CAPA. Also, I would love to hear from you on your ideas. I can be reached at (719) 473-3100.



*US 24 east of Colorado Springs, widening and asphalt overlay project, Summer, 2004
Contractor: Rocky Mountain Materials and Asphalt, Colorado Springs
Agency: CDOT Region 2 Colorado Springs Residency*



*Rob Mangone, President
CAPA Board of Directors
[Vice President, Rocky Mountain Materials and Asphalt]*

Rob Mangone
[President, CAPA Board of Directors]
Vice President/General Manager, Rocky Mountain
Materials and Asphalt, Inc., Colorado Springs



On an unrelated subject, I urge each of you to vote "No" on Amendment 34. The amendment goes beyond consumer protection to raise construction prices and encourage frivolous lawsuits.

Striving for Improved Quality and



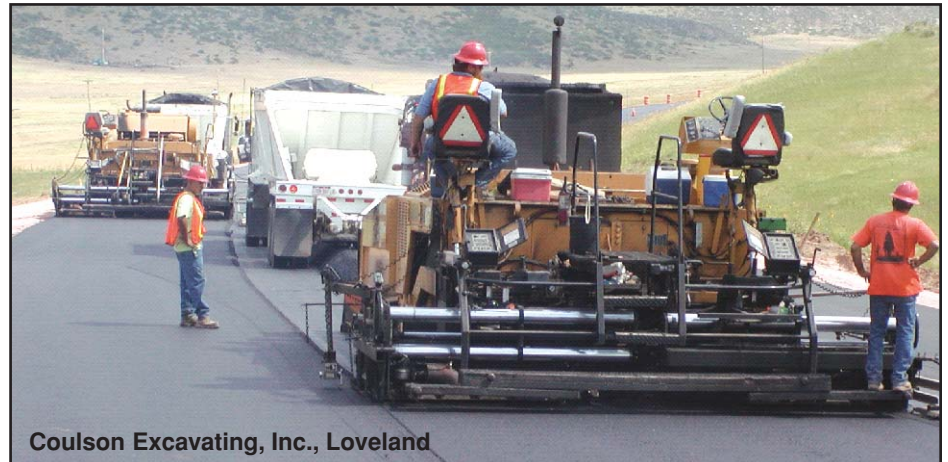
Premier Paving Inc., Denver, CO

QUALITY LEVELS OF PLANT PRODUCED MATERIALS IMPROVE

Starting in 2002, CDOT Staff Materials Branch has conducted a comprehensive quality analysis of plant produced Hot Mix Asphalt (HMA). Quality level analysis is performed on HMA material properties and pavement durability and performance characteristics. From 2002 to 2003, CDOT found a sharp increase in production quality levels. The Quality Level of all the HMA suppliers, weighted by tonnage, *increased from 83.3% in 2002 to 87.2% in 2003.*

RUTTING VIRTUALLY ELIMINATED

In 2000, the Federal Highway Administration (FHWA) Colorado Division performed a study of asphalt pavements in the Colorado and concluded that "... through the implementation of Superpave, the rutting of hot mix asphalt pavements in the past five years appears to have been substantially eliminated." The FHWA study went on to report that through the use of advanced asphalt binder technology, "... the occurrence of transverse thermal cracking has been reduced."



Coulson Excavating, Inc., Loveland

IMPROVED QUALITY CONTROL & QUALITY ASSURANCE PRACTICES

- CDOT implemented contractor quality control requirements in the early 1990's. As a result of this effort it was concluded that

"... By the end of the 1994 construction, analysis of the Quality Level Analysis (QLA) data from 2,000,000 ton of hot bituminous pavement (HBP) indicated that there was a measurable improvement in the quality of asphalt pavements over the old specifications." Reference: CDOT Staff Materials, 1998

- In 1996, CDOT partnered with the asphalt industry through CAPA to develop and implement a testing technician certification program. By 2004, nearly 1,750 technicians had been certified and the accuracy, repeatability, and confidence of technician test results have improved immensely. In 2004, a new Asphalt Inspectors Certification Program is being developed.



Colorado highway construction, 2004.

Longer Life Asphalt Pavements

Schmidt Construction Co., Inc.



MORE STRINGENT SPECIFICATION REQUIREMENTS

- By the mid 1990's CDOT had refined its asphalt specification requirements and was starting to use the mixture volumetric properties as a basis for acceptance (in lieu of the traditional approach of using physical property requirements - asphalt content and aggregate gradation). Research was conducted by CDOT on the benefits of this new approach and the findings were ...

"... future pavements built under void acceptance specifications are expected to perform in a superior manner to pavements built under conventional specifications."

Reference: HBP Pilot Void Acceptance Projects Completed in 1993-1996 Interim Report, May, 1997

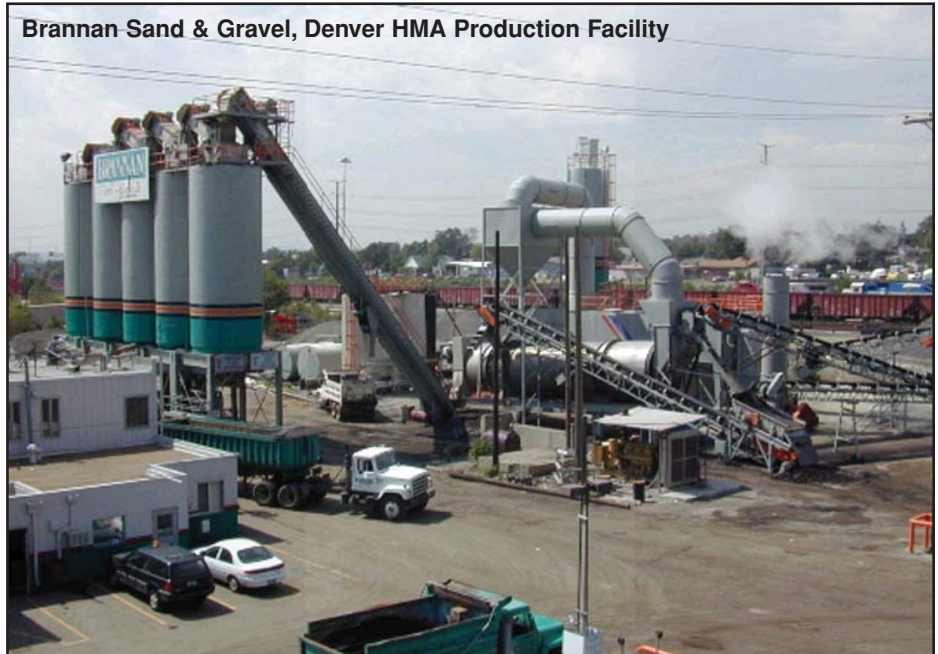
- In 2002, CDOT partnered with CAPA to develop and implement a longitudinal joint quality requirement. The requirement includes a 15% payment weighting factor. By 2004, data from quality level analysis indicates improvement in quality levels (above 90%) and that the standard deviations from test results have gone down (to around 1%).

ENVIRONMENTAL EXCELLENCE ACHIEVED IN PLANT PRODUCTION



In the spring of 2001, CAPA entered into a unique partnership with the Colorado Department of Public Health & Environment - Air Pollution Control Division. The partnership, entitled the Compass Project, led to improved air quality and reductions in emissions from hot mix asphalt production facilities. 19 companies representing 44 plants participated.

Brannan Sand & Gravel, Denver HMA Production Facility



"... you have demonstrated your commitment to the environment by going beyond compliance and your efforts have positively impacted the quality of life for all citizens of Colorado"

Governor Bill Owens in a letter to Asphalt Industry of Colorado, November, 2002

CAPA RECEIVES ENVIRONMENTAL ACHIEVEMENT AWARD

Governor Praises Asphalt Industry for Environmental Commitment

The Colorado Asphalt Pavement Association (CAPA) was the recipient of the 2002 Colorado Environmental Achievement Award. The award was presented at a ceremony at the Governor's Mansion on November 19, 2002. Colorado Governor Bill Owens praised the asphalt industry of Colorado for its "significant environmental achievements realized by the organization through the implementation of environmentally beneficial practices." ♦

New Developments i



COLORADO IS A NATIONAL LEADER IN USE OF STONE MATRIX ASPHALT

Stone Matrix Asphalt, a European pavement technology that was first introduced in the U.S. in Maryland, Virginia, and Georgia has made its way to Colorado and great strides in its use have been made in recent years. Today, Colorado is a national leader in SMA production with approximately 400,000 tons being placed on Colorado roadways in 2004. Here is a sampling of some of the SMA projects in 2004.

I-25 T-REX	-	60,000 tons	US36-Boulder	-	30,000 tons
I-70 Hidden Valley	-	40,000 tons	E-470	-	50,000 tons
City of Aurora	-	30,000 tons	SH50 Delta	-	30,000 tons

SMA consists of a coarse aggregate skeleton to provide stone-on-stone contact to prevent rutting and a rich binder mortar to ensure long term durability. Since its introduction to Colorado in 1994, SMA pavements have performed well as wearing surfaces in high traffic volume conditions. Ten Colorado HMA producers now have experience in SMA production and 2004 saw the expansion of SMA to CDOT Region 4 and City of Littleton.



CDOT GOES TO BID WITH 10 YEAR WARRANTY ASPHALT PROJECT

The next phase of major widening on US 24 east of Colorado Springs includes a 10 year warranty on the new asphalt pavement. The project is part of a program for CDOT to eventually bid asphalt vs. concrete on major corridor new and/or reconstruction projects. The project includes approximately 5 miles of new alignment for eastbound US24 and 80,000 tons of hot mix asphalt.

NEXT PHASE OF POWERS BLVD. TO BE ONE WAY ASPHALT, ONE WAY CONCRETE

The Colorado DOT has become very innovative in its quest for determining the most cost effective pavement type for Colorado roadways. The next phase of the Powers Blvd. extension on the north end of Colorado Springs (currently under construction) will be one way asphalt and one way concrete. The side-by-side comparison will provide an excellent proving ground and a long term test and evaluation project.

n Asphalt Technology

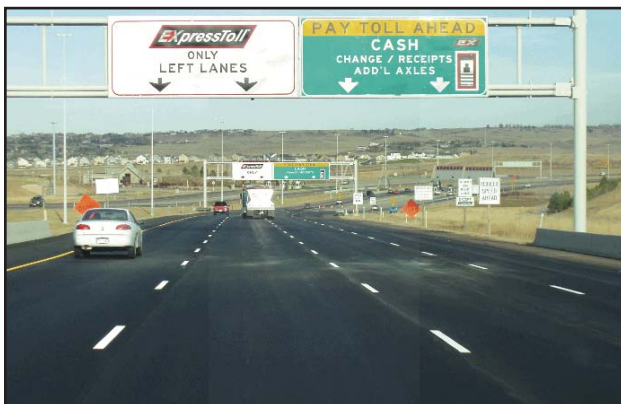
COLORADO PAVEMENT EXPERTS STUDY LONG LIFE ASPHALT PAVEMENTS

The International Symposium on the Design and Construction of Long Lasting Asphalt Pavements was held at the National Center for Asphalt Technology on June 7-10 and drew 215 asphalt practitioners from around the world including CAPA Research Engineer Dennis Donnelly and Jay Goldbaum, CDOT's Pavement Management Engineer. The event was sponsored by the International Society for Asphalt Pavements (ISAP). Nearly one-fourth of those attending were from outside the U.S. The international delegations were led by 13 people from Australia, 10 from Canada, and 6 from Denmark. Delegates heard 37 presentations on various long life asphalt pavement-related topics including advances in pavement design, long lasting surface mixes, perpetual pavements, etc. and toured the NCAT Test Track facility. The Symposium was well received by Mr. Goldbaum.



"This specialty workshop was a great benefit to CDOT because we learned a great deal from other state's and country's research and experiences. Future symposiums may benefit CDOT as we attempt to design and construct cost effective long life asphalt pavements."

Jay Goldbaum - CDOT Pavement Management Engineer



COLORADO'S TOLL FACILITIES SELECT ASPHALT



The E-470 Public Highway Authority selected hot mix asphalt for the pavement of choice on its 26-mile tollway. With the flexibility of the hot mix asphalt option, the Authority was able to incorporate the stage construction concept by keeping initial cost to a minimum while serving the initial level of traffic on the facility. Then, after five years when additional revenue was available, the originally designed top lift was added to the facility. The E-470 Public highway Authority is performing well and the motorists are enjoying the smooth, quiet ride of hot mix asphalt. In 2004, over 50,000 tons of Stone Matrix Asphalt was placed on E-470.

asphalt as the pavement of choice for the tollway opened in November 2003. This 9½ mile facility required over 250,000 tons of hot mix asphalt and was constructed on time and within budget using the design-build contracting approach. The mainline pavement was constructed without one single must-grind. According to Dick Bauman, Chief Engineer - Northwest Parkway, hot mix asphalt was selected because of the financial constraints of the project and the ability of asphalt to be maintained without impacting toll collection. In addition, the staged construction favored asphalt. A 7" pavement structure has been placed with a planned 2" overlay in the future as traffic levels increase. Another key aspect of the project was that all entrance and exit ramps of the corridor are in hot mix asphalt.

As the success of the E-470 and the Northwest Parkway tollways has demonstrated, asphalt technology provides a durable, cost-effective pavement with a smooth and quiet ride. ♦



New Asphalt Inspector Certification Course Gets Underway

The inaugural Asphalt Inspector Certification course is being held on Wednesday, October 27, 2004 in the RMAEC classroom. All inspectors (agency and consultant personnel) performing inspection services on state funded asphalt projects will be required to be certified. Additional 2004 courses will be held on November 17 and December 14. Registration information can be downloaded from the CAPA website (www.co-asphalt.com). The course is also open for attendance by contractors and local agency personnel. ♦

THE USE OF THE ASPHALT PERPETUAL PAVEMENT COMES TO COLORADO

The design and construction of the asphalt Perpetual Pavement is being implemented in Colorado. CDOT has planned its first project and the City and County of Denver and the City of Littleton have constructed perpetual pavements projects this past construction season. The philosophy of the perpetual pavement is design an asphalt pavement with the right materials and layers to prevent full depth bottom-up fatigue cracking. The approach will ensure pavement distresses are top down in nature and can be addressed through preventive maintenance, and rehabilitation but not reconstruction.

CDOT PLANS PILOT ASPHALT PERPETUAL PAVEMENT PROJECT

CDOT Region 1 is moving forward with plans to widen US 285 (Foxton Rd. – Richmond, near Aspen Park - Conifer) and the plans include the pilot use of an asphalt perpetual pavement design. The project scope includes a multi-layered 8" asphalt section that will include a stone matrix asphalt (SMA) wearing surface. The asphalt pavement work (approximately 50,000 tons of HMA) will be included as part of a larger project that will consist of earthwork, grading, and structure construction. The project is expected to be completed in 2005. The preliminary asphalt pavement design includes a 2½" "rich binder" bottom mat designed at 0.5% above optimum asphalt binder content (approximately 14,000 tons of HMA), 2 – 2" intermediate mats (Grading S-100), and a 1½" sacrificial SMA wearing surface.

HEAVILY TRAFFICKED MINERAL BOULEVARD IN LITTLETON GOES PERPETUAL

*Perpetual Pavement Construction on Mineral Blvd. in Littleton, Colorado.
Contractor: Lafarge-NA*

The City of Littleton took an innovative approach to the reconstruction of busy Mineral Boulevard. According to Frank Marbury, P.E., Project Engineer, a 30-year design was used and found to be cost effective. A multi-layered asphalt pavement (SG & SMA) is being used. The project consists of 30,000 tons of HMA including 6,000 tons of 2½" SMA surface.



*Perpetual Pavement Construction on Tower Avenue in Denver, Colorado.
Contractor: Asphalt Specialties Company Inc.*

DENVER EVALUATES PERPETUAL PAVEMENT LIKE DESIGN ON TOWER AVE.

The City and County of Denver is evaluating the benefits of the asphalt perpetual pavement design on busy Tower Avenue from 48th Ave. to 54th Avenue. Asphalt Specialties Company Inc. is constructing the project that consists of 14" of full depth asphalt. The pavement design consists of two different layers with a Grading G on the bottom and a Grading S on the surface with a modified asphalt (PG 76-28). The subgrade has been flyash treated. The project also includes the installation of new curb and gutter. The project will be constructed in two phases (Northbound first, followed by Southbound).



CSU Making Progress in Asphalt Technology

The Colorado State University Heavy Construction Program continues to support the asphalt industry of Colorado and progress is being made. CSU representatives, including new Dean April Mason, Ph.D. briefed Tom Peterson at a recent meeting at the CAPA office.



CSU Representatives Visit CAPA Office - Tom Peterson, CAPA Executive Director (far left) with from right, April Mason, Ph.D., Dean, CSU College of Applied Human Services; Camy Cooney – Director of Development, CSU College of Applied Human Services; Larry Grosse, Ph.D., Department Head – CSU – Construction Management. ♦

Annual CAPA Golf Tournament A Success

A fun time was had by all at the 13th Annual CAPA Golf Tournament/Scholarship Fund Raiser held on September 13, 2004 at the beautiful Fox Hollow Golf Course in Littleton. 180 golfers enjoyed the golf, the great weather, the steak dinner, and all of the prizes. Over \$4,000 was raised for the scholarship fund. Congratulations go to all of the winners and much thanks to the Golf Tournament Planning Committee which includes **Jay Milburn** – MHC Kenworth, **Dale Decker** – Dale Decker LLC, **Jeff Lovill** – Great American Sweeping, **Bill Barriere** – Klienfelder, **Skip Hlad** – SEH Consultants, and **Rodger Young** – CAPA. ♦



GO WITH 1A! CAPA SUPPORTS RTA INITIATIVE IN COLORADO SPRINGS

The El Paso County based initiative to establish a Rural Transportation Authority (RTA) and implement a 1% sales tax measure is gaining momentum. The measure to support transportation improvements will not only reduce congestion and address roadway safety concerns in this quickly growing area, but it will also provide for a significant increase to transportation funding in the Colorado Springs area. If the 1A ballot measure passes, it is estimated that \$70 million per year for 10 years will be added to transportation funding in El Paso County. 55% of the funds will be for capital improvement projects, 35% for roadway maintenance and 10% for transit improvements To become involved in the initiative or to find out how you can help, contact Bill Knapp Pikes Peak Transportation Coalition, (719) 477-4927. Campaign Donations can now be made out to: "GO WITH 1A" and sent to: P.O.Box 1371, Colorado Springs, CO 80901. ♦



Industry supporters of El Paso County Transportation Ballot Initiative with public officials; left to right, Colorado Springs Mayor Lionel Rivera, Transportation Coalition Chairman Dan Stuart, Tom Peterson – CAPA, Wayne Williams – El Paso County Commissioner, and Jay Lower – CCA.

CAPA WELCOMES

Producer Member

COLORADO ASPHALT SERVICES, Inc. ("CASI")

3700 E 56th Ave
Commerce City, CO 80022
Phone: (303) 292-3434
Fax: 303-292-6267
www.coloradoasphalt.net



Contact: H. Wayne Leiser, President
John Boumeester, Vice President

Colorado Asphalt Services, Inc. ("CASI"), a Colorado corporation, is a locally owned and operated asphalt company with its headquarters and asphalt plant in Commerce City. It manufactures asphalt in a new, state-of-the-art A1-mix asphalt plant, and sells asphalt in outside sales as well as performs asphalt repairs, maintenance, and replacement on streets and parking lots. It also paves new streets and parking lots/drive areas.

Producer Member

HALL-IRWIN CORPORATION

3026 4th Ave
Greeley, CO 80631
Phone: (970) 352-6057
Fax: (970) 352-6284
www.hall-irwin.com



Contact: Jim McFarland, VP Aggregate Group
Jim Earl, Aggregate Group Sales Manager

Greeley-based Hall-Irwin Corporation has become one of Northern Colorado's most diversified general contractors and, with approximately 300 employees, one of its leading employers. Over the last four decades, Hall-Irwin Corporation has participated in the construction of over 1,500 residential and commercial subdivisions construction, land development, aggregates, ready-mixed concrete, asphalt and golf course management along the Front Range of Colorado and Wyoming as well as many cross country water transmission projects.

With the addition of **Colorado Asphalt Services Inc. of Commerce City and Hall-Irwin Corporation of Greeley**, CAPA now represents each and every hot mix asphalt producer from the Wyoming state line through the Colorado Front Range (Ft. Collins, Denver, Colorado Springs). This solidarity in membership strengthens the voice of the industry and enhances CAPA's ability to meet the mission of the association. ♦

Affiliate Member

DEERY AMERICAN CORPORATION

P.O. Box 4099
Grand Junction, CO 81502
Phone: 970-858-3678
Fax: 970-858-3679
info@deeryamerican.com
www.deeryamerican.com



Contacts: Robert Zentner, Owner; Wally Smit, VP / General Manager
Deery American Corporation is a manufacturer / supplier of pavement preservation products.

Associate Member

FOOTHILLS PAVING & MAINTENANCE, INC.

9005 W. 32nd Avenue
Wheat Ridge, CO 80033
Phone: 303-462-5600
Fax: 303-462-5601
foothillspaving@aol.com



Contact: Michael Horn, President
Lori Garcia, Office Manager

Foothills Paving & Maintenance, Inc. provides sealcoating, crack-sealing and asphalt patching services to residential and commercial customers.

Affiliate Member

OSCS

100 E. Highway 67
Keene, TX 76959
Phone: 817-648-0892
Fax: 817-648-0892
office@onestopcal.net
www.onestopcal.net



Contacts: James Stiles, President; Deborah Stiles, Secretary
OSCS offers service and calibration of superpave compactors, burn-off ovens, scale calibration, nuclear density gauge service and calibration.

Associate Member

PAVING ACCENTS & ENGINEERING, INC.

1136 East Stuart, Suite 4207
Ft. Collins, CO 80525
Phone: 970-221-5322
Fax: 970-221-5329



Contact: Brad Burgat, Managing Member
Evan Beauprez, Operations Manager

Paving Accents & Engineering, LLC provides applications of StreetPrint products.

Associate Member

PIONEER ASPHALT RESTORATION CO.

P.O. Box 50179
Denton, TX 76206
Phone: 940-381-3778
Fax: 940-898-0951



asphaltrestoration@thaten.com

Contacts: Mike Thaten; Linda Thaten
Pioneer Asphalt Restoration Co.

Asphalt rejuvenator, Pavement Dressing Conditioner (PDC).

NEW MEMBERS

Associate Member

MONTGOMERY BUCHL INDUSTRIES, INC.

P.O. Box 1721
Eastlake, CO 80614-1721
Phone: 303-286-1488
Toll Free: 877-883-1488
Fax: 303-286-1479
cmrock@cs.com



Contacts: Chad Montgomery, President; Gregg Buchl, Vice President

Montgomery Buchl Industries Inc. provides aggregate equipment, parts and electrical services.

Affiliate Member

OVIATT, CLARK AND GROSS, L.L.P.

4251 Kipling #500
Wheat Ridge, CO 80033
Phone: (303) 423-0167
Fax: (303) 423-0191

OVIATT, CLARK AND GROSS, L.L.P.
A LIMITED LIABILITY PARTNERSHIP

Contact: Daniel Gross, Esq.

Oviatt, Clark and Gross is a limited liability partnership specializing in the areas of civil/commercial litigation, construction law, corporate law and government contracts.

Affiliate Member

MADISON FINANCIAL PARTNERS

4600 S Ulster #1200
Denver, CO 80237
Phone: (303) 300-4353
Fax: (303) 692-8449



Contact: Paul Larance, Partner; Randy Williams, Partner
Madison Financial Partners provides comprehensive Fee-Based Financial Planning and Investment advisory services for Executives and Business Owners. Its team of financial planners focuses their expertise on solutions for retirement, gifting, business succession, investment and insurance planning. The dynamic account aggregation technology employed by Madison Financial Partners allows its clients to know if their financial plan is on track each and every day.

Affiliate-Agency Member

EAGLE COUNTY ROAD AND BRIDGE

Box 250
Eagle, CO 81631
Phone: (970) 328-3540
Fax: (970) 328-3546
www.eagle-county.com



Contact: Brad Higgins, Director
Gordon Adams, Assistant Director

The Engineering Department manages, designs and inspects, public works projects that include roads, bridges, pedestrian facilities, and natural resources improvements; reviews development applications for compliance with engineering standards; Provides construction, right-of-way, traffic and support engineering; oversees Eagle County floodplain administration; and issues floodplain development, road cut, grading and access permits.

Affiliate Member

McCANDLESS INTERNATIONAL TRUCKS OF COLORADO

16704 E 32nd Ave
Aurora, CO 80011
Phone: (303) 739-9900
Fax: (303) 739-2556
www.mccandlessintl.com



Contact: Scott McCandless, President
Doug Allison, Sales Representative

Commercial Truck Retailer, three (3) locations: Aurora, Colorado Springs and Pueblo. Parts, Service, Rental Lease and Body Shop.

Affiliate-Agency Member

TOWN OF CARBONDALE

511 Colorado Ave
Carbondale, CO 81623
Phone: (970) 963-1307
Fax: (970) 963-0620
www.carbondale.com



Contact: Larry Ballenger, Public Works Director
Smiley Wise, Public Works Supervisor

The Town of Carbondale encompasses two (2) square miles and has a population of 6,000. Carbondale lies in a valley between the Crystal and Roaring Fork Rivers, 30 miles northwest of Aspen and 12 miles southeast of Glenwood Springs.

Affiliate Member

KUKA INDUSTRIES

9630 Dallas St
Henderson, CO 80640
Phone: (303) 288-6057
Fax: (303) 288-5947
www.kukaindustries.com



Contact: Garry Kuka

KUKA Industries opened for business in March of 1995 to supply local testing labs and material suppliers with testing equipment and supplies. Their goal was to "provide what the customer wanted, when they wanted it, and at a fair price." Their success is a result of having a staff that knows the equipment and has had experience using it in the field and in the lab. Today, they carry a complete line of testing equipment for Asphalt, Concrete, and Soils, with a substantial inventory in their 5000 sf. facility in Adams County.

Affiliate-Agency Member

SAGUACHE COUNTY ROAD AND BRIDGE

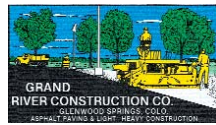
Box 476
Saguache, CO 81149
Phone: (719) 655-2554
Fax: (719) 655-2543
www.saguache.org



Contact: John Ungefug, Road Supervisor

Ken Biggs, Plant Operator

Saguache County is 3,000 square miles with a population of 6,000 plus. Cities include Center, Saguache, Crestone, Moffat and Bonanza



For High Quality Asphalt Paving or Services -Call Our Associate and Affiliate Members

Associates

A-1 Chipseal, Broomfield	303-464-9267
A-Peak, Inc., Vail	970-476-8855
A.G. Wassenaar Inc., Denver	303-759-8100
ASAP Companies, Colorado Springs	719-495-9013
ARS Inc., Littleton	303-791-7404
Astec, Inc., Chattanooga, TN	423-867-4210
Atser, L.P., Englewood	303-779-3321
Avery Asphalt, Inc., Colorado Springs	719-471-0110
Black Gold Asphalt, Littleton	303-791-8300
Bomag Americas, Inc., Las Vegas, NV	309-852-6163
Brasier Asphalt, Montrose	970-249-2553
Carder Inc., Lamar	719-336-3479
Carter & Burgess, Denver	303-820-5240
Castle Rock Construction Co., Castle Rock	303-688-6611
CEI Enterprises, New Mexico	800-545-4034
Chemical Lime Co., Scottsdale, AZ	800-288-9676
Cobito Inc., Denver	303-296-8575
Colorado Machinery, Colorado Springs	719-475-1100
CTL/Thompson, Denver	303-825-0777
Cutler Repaving, Inc., Lawrence, KS	785-843-1524
Dallorosa Construction Co., Silverthorne	970-262-1016
Dillman Equipment, Ft. Collins	970-498-0525
Dustrol Inc., Albuquerque	505-891-8342
Earth Engineering Consultants, Ft. Collins	970-224-1522
Faris Machinery Co., Commerce City	303-289-5743
Foothills Paving & Maintenance, Inc., Wheat Ridge	303-462-5600
Gencor Industries Inc., Conifer	303-670-5456
Goltz Asphalt, Loveland	970-663-2343
Ground Engrg. Consult, Commerce City	303-289-1989
Hankel Trucking, Cheyenne WY	307-632-4850
H-P Geotechnical, Inc., Glenwood Sprgs	970-945-7988
Inter-Mountain Construction Equipment, Ft. Lupton	303-857-0327

Inter-Mountain Engineering, Avon	970-949-5072
Iowa Tanklines, Inc. Henderson	303-227-1272
Kleinfelder, Inc., Colorado Springs	719-632-3593
Kumar and Associates, Denver	303-742-9700
Macdonald Equipment Co., Commerce City	303-287-7401
MBI Inc., Henderson	303-286-1488
Mesa Paving Inc., Grand Junction	719-545-9178
Metso Minerals, Englewood	303-792-0393
Northwest Colorado Consultants, Inc., Steamboat Springs	970-879-7888
Paving Accents & Engineering, LLC, Fort Collins	970-221-5322
Pete Lien & Sons Inc., Rapid City SD	605-342-7224
Pioneer Asphalt Restoration, Denton, TX	940-382-3778
Power Equipment Co., Denver	303-228-6801
Power Motive, Denver	303-355-5900
PSI, Wheat Ridge	303-424-5578
Quality Paving Co., Henderson	303-288-1036
Resonant Machines, Tulsa OK	918-749-2209
Roadtec Inc., Grand Junction	970-270-5026
Rocky Mountain Chipseal LLC, Fairplay	719-836-7060
Rocky Mtn Pavement Mtce, Denver	303-650-9653
Son-Haul, Fort Morgan	970-867-4401
Sunstate, Commerce City	720-322-7000
Terracon, Fort Collins	970-484-0359
Terex Roadbuilding, Oklahoma City, OK	405-787-6020
URS Corporation, Denver	303-694-2770
Vance Bros., Aurora	303-341-2604
Wagner Equipment Co., Aurora	303-349-3496
Western CO Testing Inc., Grand Junction	970-241-7700
Western Tech. Inc., Farmington NM	505-327-4966
Westest Inc., Denver	303-975-9959
Wynne Transport Service, Omaha	402-342-4001
Yeh Associates, Inc., Englewood	303-781-9590

Affiliates

Action Gas Inc., Pine	303-838-1075
Award & Sign Connection, Greenwood Village	303-799-8979
Banks and Gesso, LLC, Lakewood	303-274-4277
Burlstone, Inc., Lakewood	720-377-1040
Cheetah Advanced Technologies, Ft. Collins	970-225-2700
ChemMark Corp., Aurora	303-884-3813
Colorado Construction Magazine, Denver	303-584-6718
Deery American Corporation, Grand Junction	970-858-3678
Denver Industrial Sales & Service, Denver	303-935-2485
EnviroTech Services, Greeley	800-369-3878
FMI Corporation, Denver	303-377-4740
Great American Sweeping, Inc., Henderson	303-289-7171
HRH of Colorado, Denver	303-722-7776
Integrated Resource System, Wheat Ridge	303-271-9249
JeHN Engineering, Inc., Arvada	303-423-6036
Kuka Industries, Henderson	303-288-6057
Madison Financial Partners, Denver	303-300-4353
McCandlestick International Trucks, Aurora	303-739-9900
McVehil-Monnett Associates, Inc., Englewood	303-790-1332
Mesa Oil, Inc., Denver	303-426-4777
OSCS, Inc., Keene, TX	817-648-0892
Oviatt, Clark & Gross, LLP, Wheat Ridge	303-423-0167
Prestige, Inc., Brighton	303-659-5700
PRI Asphalt Technologies, Inc., Tampa, FL	813-621-5777
Ritchie Bros. Auctioneers, Brighton	303-659-3962
Rocky Mountain Laser, Commerce City	303-853-0311
SEH, Denver	303-758-4349
TransTech Systems, Inc., Schenectady, NY	518-370-5558
Troxler Electronics, Lakewood	303-969-0950
TST, Inc., Fort Collins	970-226-0557
BJ Unichem, Westminster	303-550-8081
Washington Group, Denver	303-843-2000
Wild West Weed Control, Parker	303-548-9315

Join Us! For information on CAPA membership, including our Agency Affiliate category, call (303) 741-6150



Colorado Asphalt Pavement Association
6880 South Yosemite Court, Suite 110
Centennial, Colorado 80112

Address Service Requested

PRESORTED
FIRST CLASS
U.S. POSTAGE PAID
ENGLEWOOD, CO
PERMIT #596

Volume 11 Issue 2 Fall, 2004

For mailing additions, deletions or changes, please contact us at:

Phone: (303) 741-6150
Fax: (303) 741-6146
email: office@co-asphalt.com



The High Road is a periodic publication of the Colorado Asphalt Pavement Association

ARE YOU ON OUR MAILING LIST?
To receive a complimentary copy of *The High Road* just call:
303-741-6150